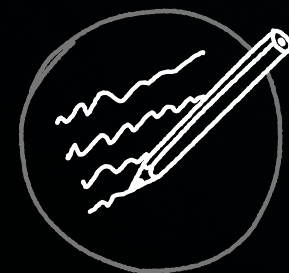
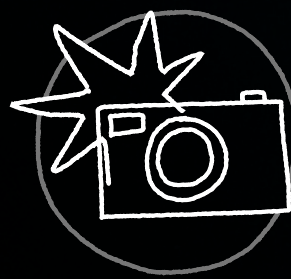


# A personal copilot for every student



Higher retention. Deeper engagement.  
A daily rhythm — between your  
live classes.



● Mission

# One app that keeps you moving toward what you're learning — every day, not just when class is in session

1 For learners

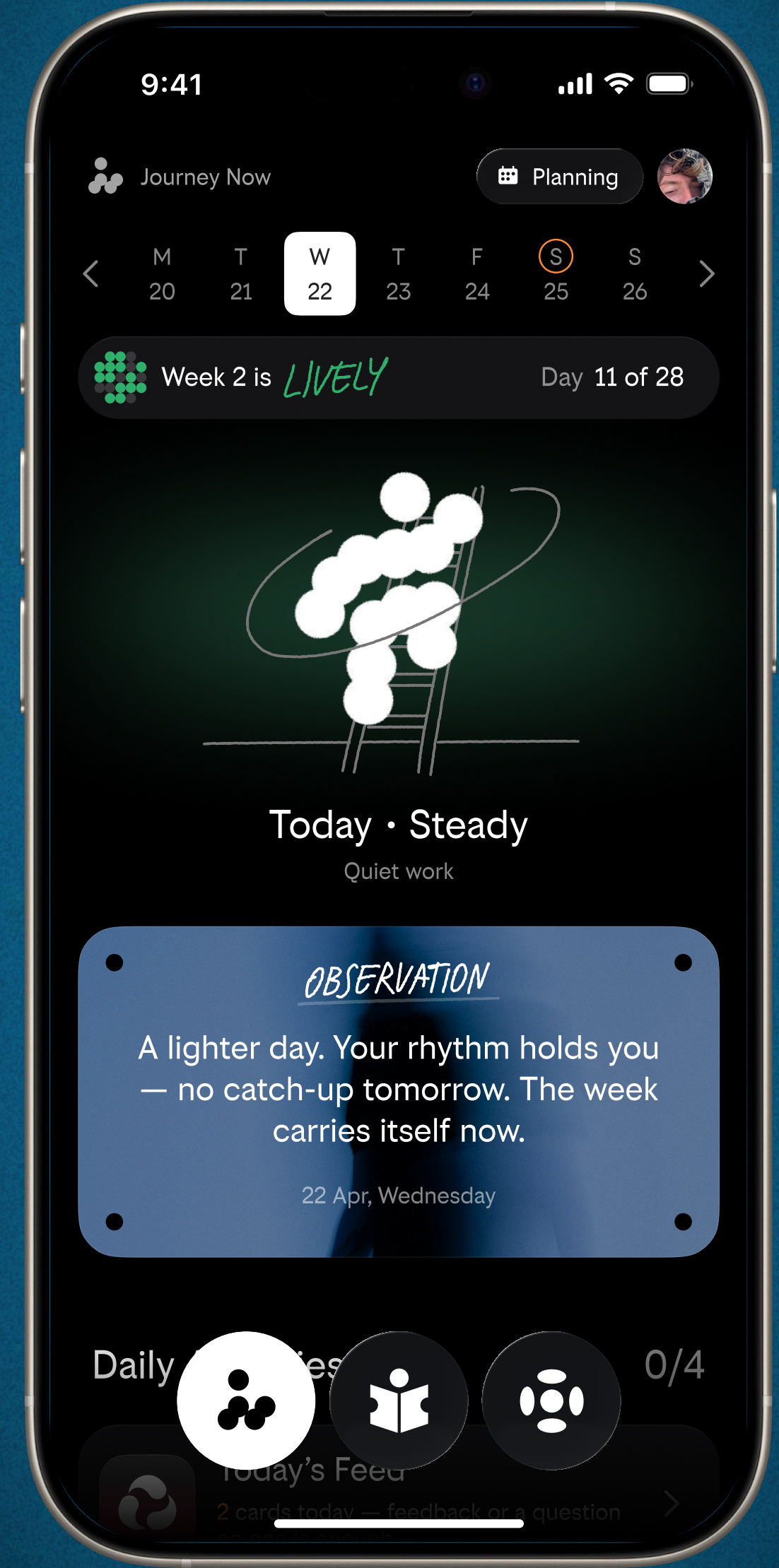
A pocket companion that keeps you in motion toward your goals — daily, personalized, accountable.

2 For educators

A tool for higher retention, deeper engagement, and sustained immersion in the subject.

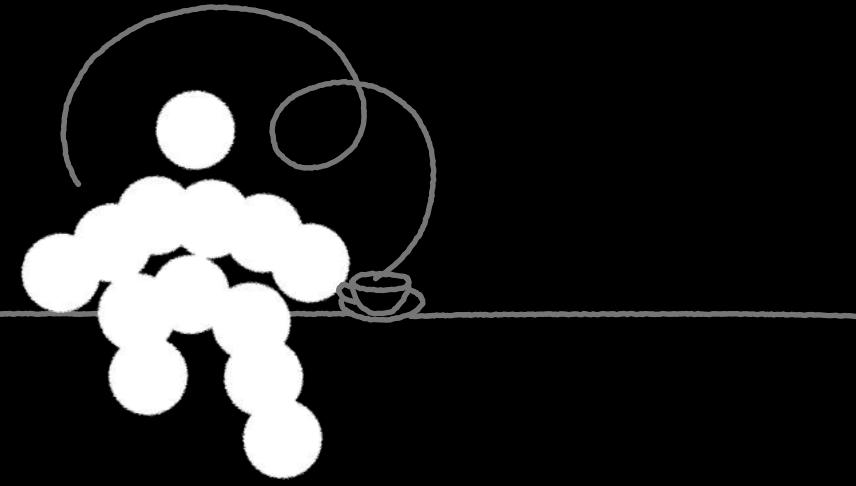
3 Where it fits

Journey Now slots into the gap between live classes — a daily, personalized rhythm connecting your program to each student.



● The Challenge

# Your students leave the room and disappear



1 Pattern: *YEARS*

Many people set out to learn or make something — and never get there. Without a structured setting, they lose focus.

2 The Generation: *GEN Z*

The day-to-day support a person needs to keep going simply hasn't existed and modern distractions make it harder to learn.

3 The Rhythm: *NONE*

What programs lack is a daily, personalized rhythm holding the student between live classes — until now.

● The Solution

# One app. A daily rhythm that inspires students between your live classes

 Goal Clarity

Onboarding shows what's underneath the surface-level wish — then recalibrates student's goal as their practice sharpens.

 Personalized Path

Adaptive paths fitted to each learner — with first-class injection where AI can change lessons' content for a specific student.

 Pods

A space for being seen and supported by close friends while you study. Small communities and no noise of a group chat.

 Educator Console

Real-time analytics on every student — engagement, focus time, what's working. Push nudges directly from your dashboard.

● How it works

# From your syllabus to a personalized student path — automatically

## 1 Upload Your Materials

Upload a syllabus, PDF, reading list, or annotated notes. Attach your own sources and frame how a student should approach the work.

## 2 AI Agent Builds the Path

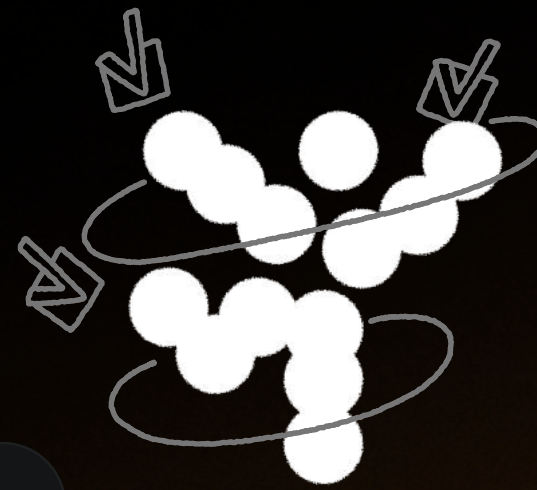
AI agent parses your content and builds a structured learning path a ready-made starting point populated with your materials.

## 3 Enriched Per Student

The path adapts to each learner in real time, the way a mentor would shape their attention differently for different students.

## 4 Live Analytics for You

See engagement, focus time, and what's landing for each student. Update the path or push specific nudges directly from the dashboard.



# The Educator Console

Your workspace. Your voice.  
In every student's pocket.

- ✓ Build a path preset from your syllabus in minutes
- ✓ Attach annotated materials, readings, and source links
- ✓ Share one link — students join the app with the path already set up
- ✓ Push nudges to a specific student from your dashboard
- ✓ Students subscribe to your public Educator profile
- ✓ Dashboard: engagement, focus time, what's working and what's not

## ● Student overview



SERHI

On track: 78%



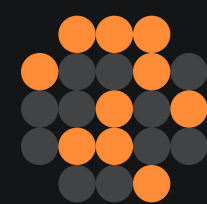
AMALIE

Needs nudge: 45%

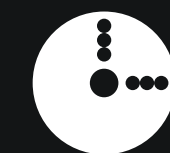


NATALIE

Thriving: 91%



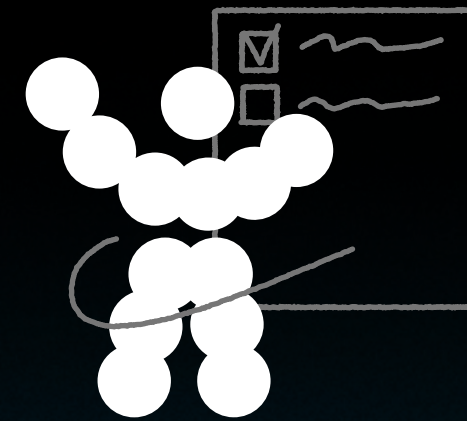
Avg. daily focus time  
+18% vs last week



34 min

● For Educators

# What Journey Now means for your program



## 1 Retention

Students stay because they have a daily, personalized rhythm in addition to live classes.

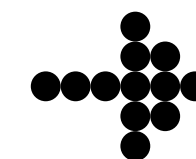
## 2 Engagement

Adaptive paths keep learners immersed in the subject, fitting how each individual studies.

## 3 Visibility

Real-time analytics on every student — so you can see what's not working and help early.

[Book a 20-min Demo](#)



[ciao@journey.now](mailto:ciao@journey.now)